



**PEPFAR**

U.S. President's Emergency Plan for AIDS Relief

# COP 22 Guidance for Faith and Community Engagement

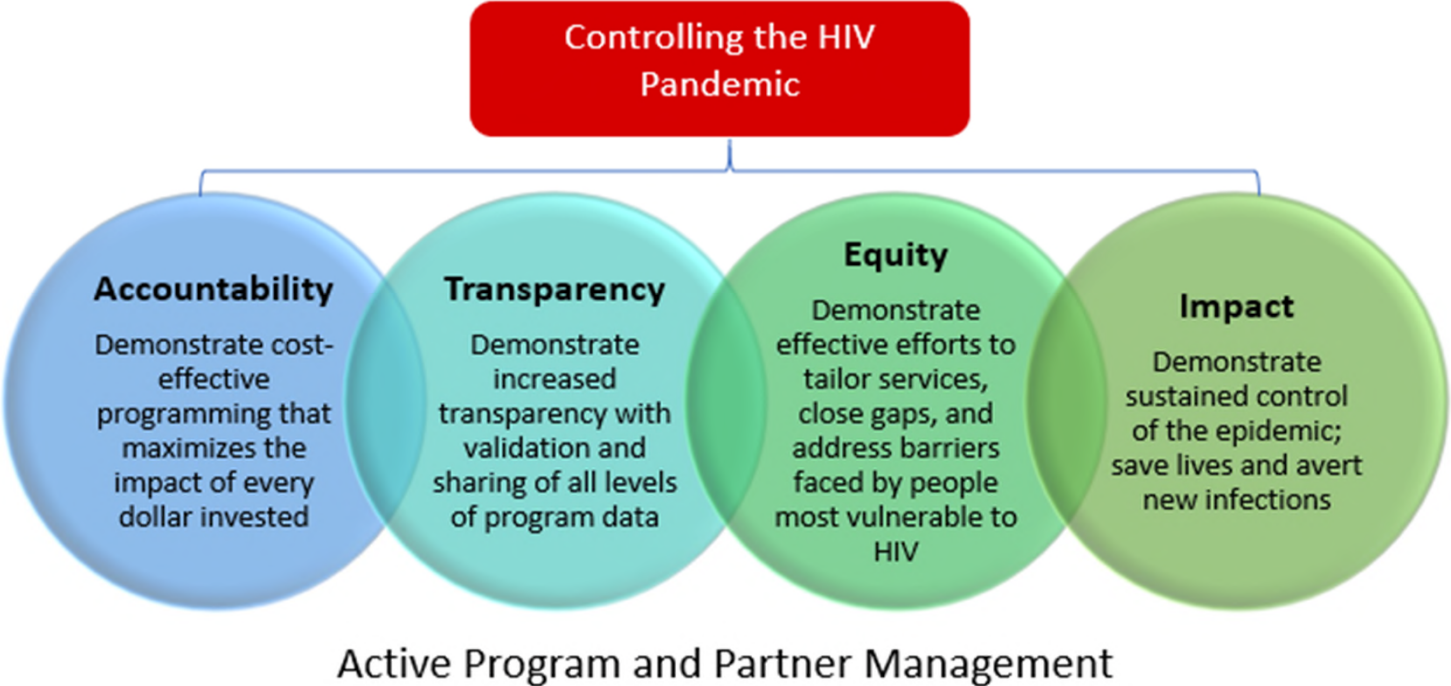
New Foundations of Hope Webinar

Wednesday, February 16<sup>th</sup>, 2022

**19 YEARS OF SAVING LIVES THROUGH AMERICAN GENEROSITY AND PARTNERSHIPS**

# PEPFAR's Guiding Pillars for Success

## PEPFAR's 4 Guiding Pillars



COP22 Guidance is located here: <https://www.state.gov/2022-country-operational-plan-guidance/>

## Vision and Implementation Themes for PEPFAR COP/ROP22

*The COP/ROP22 Vision: to advance sustained epidemic control of HIV by supporting equitable health services and solutions, enduring national health systems and capabilities, and lasting collaborations*

### **Goal 1 is to Accomplish the Mission**

Achieve and sustain epidemic control using Evidence-based, Equitable, People-Centered HIV Prevention and Treatment Services.

### **Goal 2 is to Build Enduring Capabilities**

Resilient and Capacitated Country Health Systems, Communities, Enabling Environments, and Local Partners.

### **Goal 3 is to Build Lasting Collaborations**

Strengthen Cooperation and Coordination for Greater Impact, Responsibility Sharing, and Sustainability.

# Faith and Community Engagement

## Section 6.6.4: Faith and Community Engagement

### Updates:

- The COP22 Guidance shifts language from Faith and Community Initiative (FCI) to Faith and Community Engagement (FCE)
  - The updated language reflects the ongoing need to embed faith and community engagement within core programming
  - Encourages engagement and collaboration with faith and traditional communities to increase community participation in decision-making
- PEPFAR supported-countries are encouraged to engage the unique assets of community organizations by leveraging best practices identified through FCI investments to advance and sustain community (including faith communities and FBOs) engagement activities
- Considerations and resources for implementation within the context of COVID-19

# Core Activities: Faith and Community Engagement

- Train leaders and disseminate HIV and COVID Messages of Hope through community, including faith-based community structures
- Developing an Inter-Faith Steering Committee to disseminate key messages

## Activity 1:



- Expand HIV Testing, including targeted self-testing
- Improve linkage to treatment and promote continuity of treatment
- Follow best practices for advancing case-finding by engaging faith & community leaders and FBOs

## Activity 2:



- Decrease stigma to address continuity of treatment, particularly in the context of exclusive reliance on faith-healing in congregations or communities

## Activity 3:



\*The COP22 Guidance is publicly available at: <https://www.state.gov/2022-country-operational-plan-guidance/>

Images Source: <https://www.faihandcommunityinitiative.org/> (Artist: Alice Müller)



19 YEARS OF SAVING LIVES THROUGH AMERICAN GENEROSITY AND PARTNERSHIPS

# HIV Testing Services

# Relevant COP22 HTS Updates

## **What's new in COP22 HTS Guidance?**

- Several updates have been made to the HTS technical considerations
- Two notable updates directly related to Faith and Community Engagement include:
  - Expanded guidance on use of HIVST, including considerations for using HIVST in PrEP programs (Sections 6.3.1.6 and 6.3.3)
  - Emphasis on the role of community in ensuring quality of HIV testing services (Section 6.3.1.9)

## **Key considerations for COP22 HTS programs:**

- Involvement of faith and community structures can expand access to HTS and linkage to prevention and treatment services through leveraging critical elements of community-based services, including acceptability of services and community stakeholder engagement
- FCI-funded HTS activities include innovative strategies to decentralize HTS and can be adapted for OUs (e.g., [Circle of Hope](#) in Zambia)